

DA08 || Differential Pressure Gauge

Application

These instruments are mainly used in industrial and climatic engineering to measure low and lowest differential pressures. They are suitable for measuring non-aggressive and clean gaseous media.

Construction and Operation

A capsule element measuring system is installed into a pressure-tight housing. The higher pressure acts on the inside of the capsule element, the lower pressure is lead into the pressure-tight housing.

The differential pressure arising between the internal and external side of the measuring system leads to a deformation of the capsule element.

This movement is turned into a scaled measured value indication via the motion work.



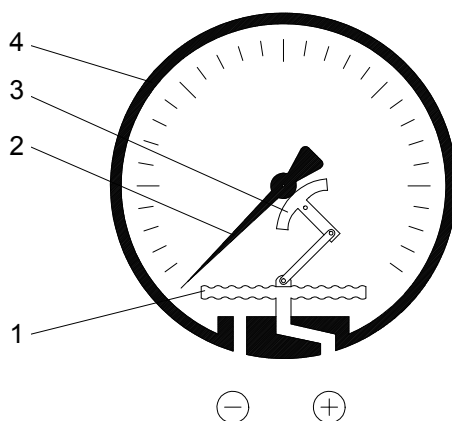
Main Features

- For small ranges (4 mbar and higher)
- Simple technical construction
- Maintenance-free

Typical Applications

- Moving tap filters
- Ventilators
- Veturitubes

Functional Scheme



1. Capsule element
2. Indicator
3. Motion work
4. Pressure-tight housing

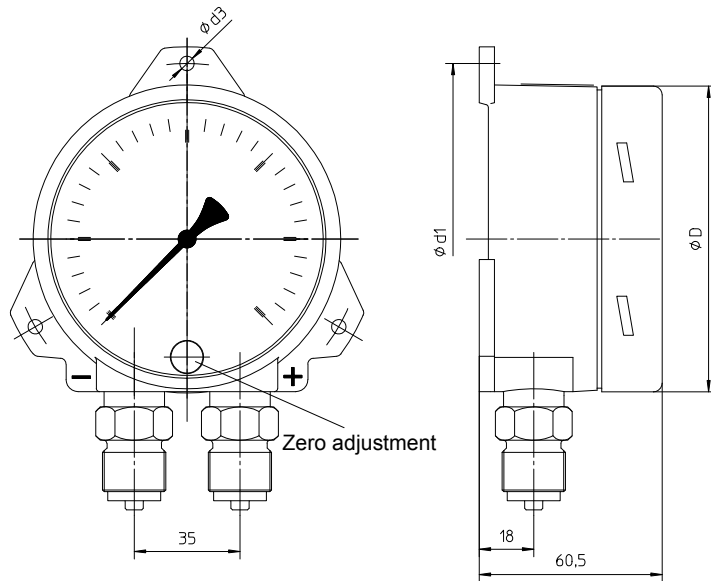


Specifications

General	
Measuring range	0...4 mbar up to 0...160 mbar (see Ordering Code)
Max. overpressure	For ranges ≤ 16 mbar 10x FS; For ranges > 16 mbar max. 200 mbar
Max. stat. operating pressure	200 mbar
Accuracy	Class 1.6 acc. to DIN 16005
Perm. ambient temperature	-20...+70°C
Max. media temperature	Max. 50°C
Indicator	Circular dial type \varnothing 100 or 160 mm, 270°-scale
Pressure connections	At the bottom or rear of the housing (depends on type, see Ordering Code)
Zero point adjustment	Located in the dial
Materials	
Housing	Aluminium varnished black
Capsule element	CuBe2
Front glass	Plexiglass
Motion work	Brass

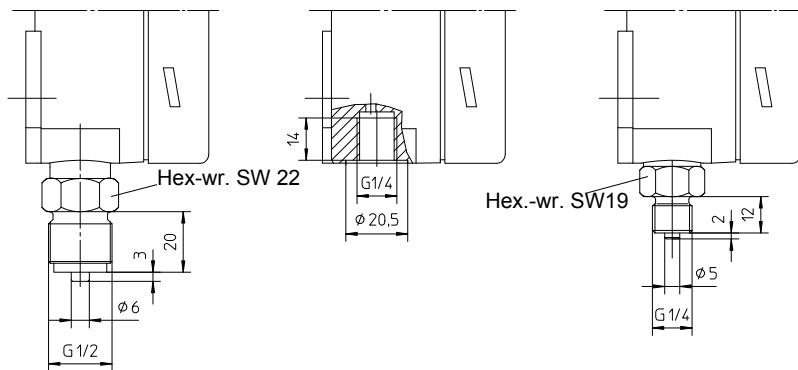
Dimensions (all units in mm unless stated otherwise)

Wall Mounting

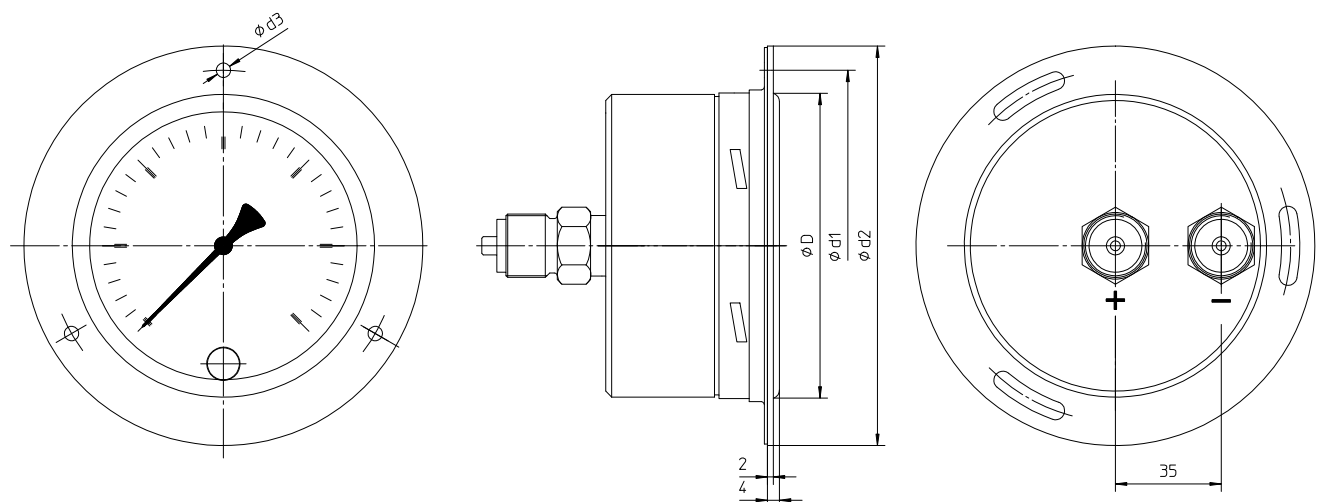


NG	ϕD	$\phi d1$	$\phi d2$	$\phi d3$
100	101	116	132	4,8
160	161	178	196	5,8

Variants of Process Connection



Panel Mounting (rear connection)



Ordering Code

Differential Pressure Gauge

DA08

		A	0									
--	--	---	---	--	--	--	--	--	--	--	--	--

Measuring Range

0 ... 4 mbar (only for size 160)	>	5	2
0 ... 6 mbar	>	5	3
0 ... 10 mbar	>	5	4
0 ... 16 mbar	>	5	5
0 ... 25 mbar	>	5	6
0 ... 40 mbar	>	5	7
0 ... 60 mbar	>	5	8
0 ... 100 mbar	>	5	9
0 ... 160 mbar	>	6	0

Nominal Pressure of Measuring System

200 mbar	>	A	0
----------------	---	---	---

Pressure Connection

Female thread G $\frac{1}{4}$	>	0	1
Male connection shank G $\frac{1}{4}$	>	0	6
Male connection shank G $\frac{1}{2}$	>	0	8
Cutting ring connection of brass for 6 mm tube	>	2	8
Cutting ring connection of brass for 8 mm tube	>	2	9
Cutting ring connection of brass for 10 mm tube	>	3	0
Screw connection of (material?) for flexible tube 6/4	>	4	7
Screw connection of (material?) for flexible tube 8/6	>	4	8

Indication

Bajonet ring case \varnothing 100, aluminium	>	U
Bajonet ring case \varnothing 160, aluminium	>	V

Mounting

Wall mounting (bottom connection)	>	B
Front ring for panel mounting (bottom connection)	>	L
Front ring for panel mounting (rear connection)	>	G

