



Wilcoxon Research model 712E / CC712E High temperature, ATEX approved integral cable accelerometer / charge amplifier system

Features

- Industrial ruggedness
- High temperature, charge output sensor with remote charge amplifier
- Ground isolated
- 260° operation (sensing element)
- 16 ft integral cable with stainless steel overbraid

Benefits

- Sensor may be operated in environments up to 260° C with remote electronics installed in cooler location

See drawing on the back

Dynamic

Sensitivity, 25° C, ± 10%.....	20 mV/g
Acceleration range.....	100 g peak
Amplitude linearity, to 100 g.....	1%
Frequency response:	
± 3 dB.....	0.5 Hz - 20 kHz
Resonance frequency.....	>37.5 kHz
Transverse sensitivity.....	3% of axial
Temperature response:	
-50° C.....	-10%
+260° C.....	+ 20%

Electrical

Power requirement:	
Voltage source.....	18 - 30 VDC
Current regulating diode.....	2 - 10 mA
Electrical noise, equiv. g:	
Broadband.....	0.001 g peak
Output impedance.....	<100Ω
Bias output voltage.....	12 VDC
Grounding.....	case isolated, internally shielded

Environmental


Temperature range:	
712E.....	-50 to 260° C
CC712E.....	-50 to 95° C
Vibration limit.....	500 g peak
Shock limit.....	5000 g peak
Base strain.....	0.002 g/μstrain

Physical


Sensing element design.....	PZT, shear
Weight:	
712E.....	40 g (excluding cable)
CC712E.....	123 g
Case material:	
712E.....	316L stainless steel
CC712E.....	glass reinforced plastic
Mounting for 712E.....	8-32 captive screw
712E integral cable.....	J3, 16 ft with stainless steel overbraid, 10-32 microdot connector

Connections (CC712E)

Function	Connector
712E input	P1
power / signal	P2
V+ / signal	left
common	center
shield / ground	right

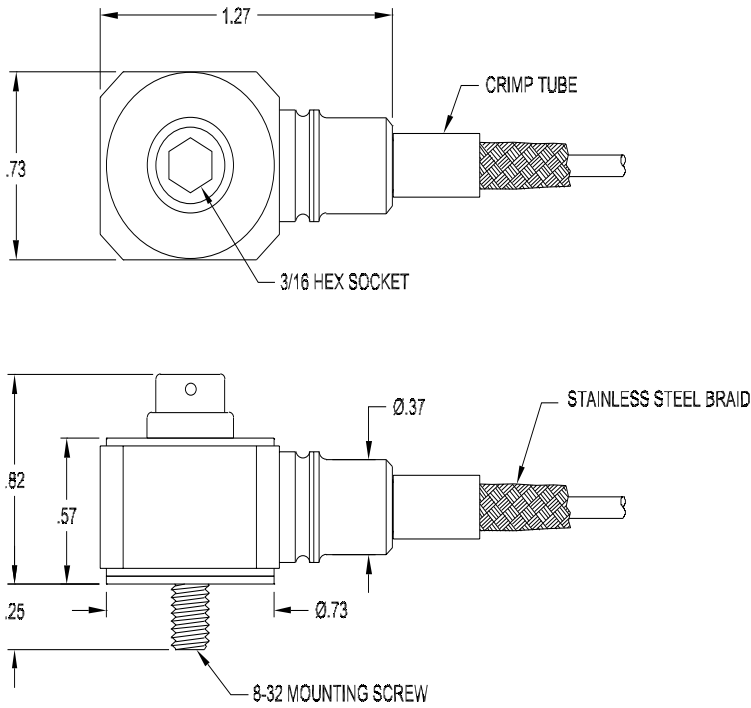


II 1G
Ga Ex ia IIC T2
Amplifier T_{amb} -50 to 95° C
Transducer T_{amb} -50 to 260° C

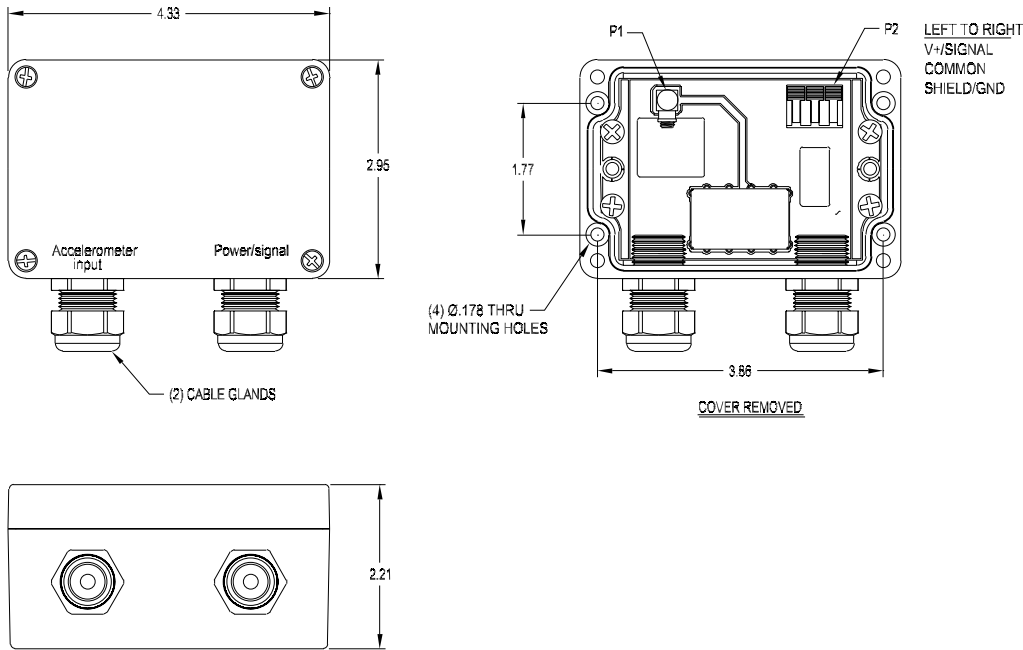


For hazardous area locations, sensor must be installed in accordance with installation instructions or local code requirements
Electrical safety barrier required for hazardous area installations

Wilcoxon Research model 712E



Wilcoxon Research model CC712E



Meggitt Sensing Systems
 20511 Seneca Meadows Parkway
 Germantown MD 20876
 USA

Tel: 301 330 8811
 Fax: 301 330 8873
 Email: wilcoxon@meggitt.com

www.wilcoxon.com
 www.meggitt.com

MEGGITT
 smart engineering for
 extreme environments
 98959 Rev.A.1 10/12