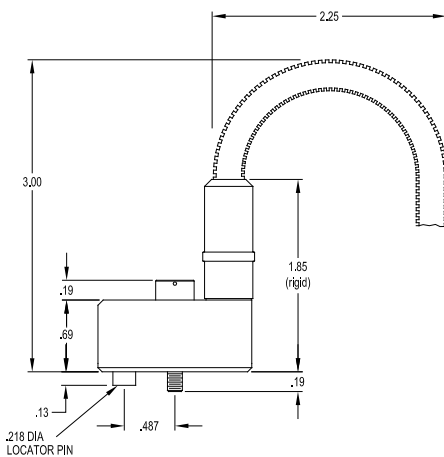
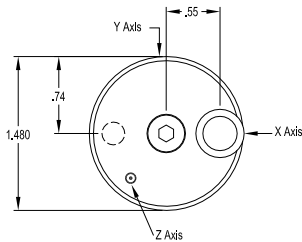




## Wilcoxon Research model 993B series General purpose, hermetic triaxial accelerometer

### Features

- Rugged hermetic design
- General purpose
- Broad frequency response
- Easy to mount, positioning pin
- EMI/RFI protection
- ESD protection
- Reverse wire protection
- Low noise
- Low weight
- Armor jacketed cable



	993B-5	993B-6	993B-7
<b>Dynamic</b>			
Sensitivity, $\pm 10\%$ , 25° C.....	25 mV/g	50 mV/g	100 mV/g
Acceleration range .....	160 g peak	80 g peak	40 g peak
Amplitude nonlinearity .....	1%	-	-
Frequency response <sup>1</sup> :			
Z axis $\pm 3$ dB .....	2 - 10,000 Hz	-	-
X and Y axis $\pm 3$ dB .....	2 - 7,000 Hz	-	-
Transverse sensitivity, max. ....	7% of axial	-	-
<b>Electrical</b>			
Power requirement: voltage source .....	18 - 30 VDC	-	-
current regulating diode .....	2 - 5 mA	-	-
Electrical noise, equiv. g, nominal:			
Broadband 2.5 Hz to 25 kHz .....	336 $\mu$ g	220 $\mu$ g	160 $\mu$ g
Spectral			
10 Hz .....	24 $\mu$ g/ $\sqrt$ Hz	15 $\mu$ g/ $\sqrt$ Hz	10 $\mu$ g/ $\sqrt$ Hz
100 Hz .....	3.2 $\mu$ g/ $\sqrt$ Hz	2.0 $\mu$ g/ $\sqrt$ Hz	1.4 $\mu$ g/ $\sqrt$ Hz
1000 Hz .....	2 $\mu$ g/ $\sqrt$ Hz	1.1 $\mu$ g/ $\sqrt$ Hz	1.0 $\mu$ g/ $\sqrt$ Hz
Output impedance, max. ....	400 $\Omega$	-	-
Bias output voltage .....	11 VDC	-	-
Grounding .....	case isolated, internally shielded		
Turn-on time .....	<1 sec	-	-
<b>Environmental</b>			
Temperature range .....	-50 to 120° C	-	-
Vibration limit .....	500 g peak	-	-
Shock limit .....	5,000 g peak	-	-
Electromagnetic sensitivity, equiv.g. ....	100 $\mu$ g/gauss	-	-
Sealing .....	hermetic	-	-
Base strain sensitivity, max. ....	0.0005 g/ $\mu$ strain	-	-
Hydrostatic pressure, max .....	100 psi (IP68)	-	-
<b>Physical</b>			
Weight (excluding cable) .....	134 grams	-	-
Case material .....	316L stainless steel	-	-
Cable .....	integral, 16 ft Teflon <sup>®</sup> J9T4B, armored	-	-
Cable termination .....	stripped and tinned <sup>2</sup>	-	-
Mounting .....	10-32 captive screw	-	-

### Connections

Function	Cable conductor color
X axis, power / signal	green
Y axis, power / signal	red
Z axis, power / signal	white
common (all channels)	black
N/C	shield

Notes: <sup>1</sup> As measured using the mounting screw

<sup>2</sup> Optional cable terminations: R11D (11-pin Fischer), R9W (4-pin Bendix), R21 (4-pin Amp), 3xR2 (BNC)

Accessories supplied: captive screw, calibration data

Meggitt Sensing Systems  
20511 Seneca Meadows Parkway  
Germantown, MD 20876  
USA

Tel: 301 330 8811  
Fax: 301 330 8873  
Email: wilcoxon@meggitt.com

www.meggitt.com