

# Field Services and Consultancy



Istec provides brand-independent service to rotating equipment manufacturers, engineering and construction companies and end-users in the process- and power industry.



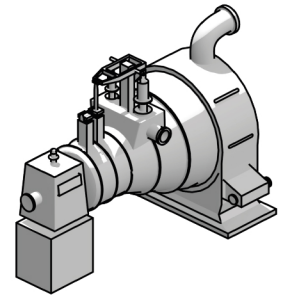
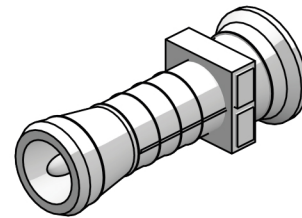
# Machine monitoring

Istec is specialized in the field of machine monitoring- and protecting systems for vibration and overspeed. These systems are used to protect from damage and dangerous situations and to monitor the machine.

Istec offers brand-independent service to a broad range of machine monitoring systems.

These services include:

- Engineering, functional and detailed design to upgrade, adjust or replace systems
- Creating service procedures for SIL proof tests
- Turnaround service and maintenance
- Machine monitoring and measurement systems; advisory, delivery and installation for new systems from different brands.



## Brand-independent

Our services are brand independent and we are familiar with the biggest brands:

- Vibro-Meter (Meggitt)
- Bently Nevada
- Brüel & Kjaer
- JAQUET
- Entek / IRD
- Metrix
- SKF
- and others

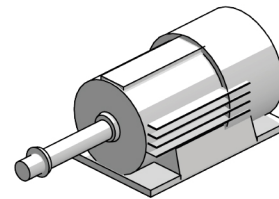
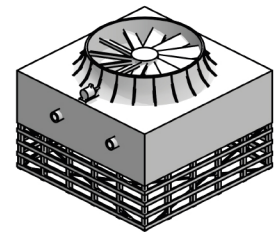
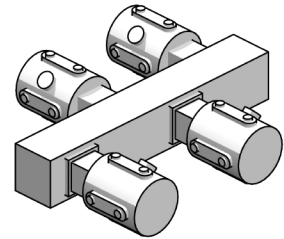
# Turn-around services

Istec offers a wide variety of turn-around services. Our specialists can verify and maintain complete vibration- and overspeed monitoring systems during a scheduled stop.

Operating brand-independently, Istec provides a one-stop-shop for turnaround activities.

These activities include:

- SIL proof tests
- ATEX-compliance scan
- Project management
- De(mounting), inspecting, calibrating, adjusting sensors and systems



*"Customers choose Istec for its strong competence in vibration systems, overspeed systems and Functional Safety. We deliver knowledge on demand."*

Koos Hemmes - Consultancy Rotating Equipment, SIL and ATEX



# Consultancy services



## SIL proof tests

To maintain the integrity of a Safety Instrumented Function, Istec can perform a SIL proof test during troubleshooting or scheduled turnaround. There are 3 types of proof tests:

- Diagnostic test
- Partial proof test
- Full proof test

Based on the maintenance plan our Functional Safety engineers determine which proof test is necessary to prevent the Safety Integrity Level to degrade.



## ATEX- compliance

Istec specializes in ATEX compliance scans. This scan is executed prior to a turnaround. It aims to provide insights in shortcomings in relation to cabling, cable entries, junction boxes, instrumentation and installation methods.

Situations that are not in line with ATEX guidelines are registered and will be included in the plan of action. During the turnaround the registered flaws will be resolved.



## Functional Safety

Our highly educated and experienced Functional Safety engineers offer consultancy in order to implement and maintain safety instrumented systems (SIS). Our engineers provide the required documentation and the maintenance of the SIS. Our experience and knowledge (IEC 61511) enables a very pragmatic approach. Using insights into the current situation as a starting point for our advice, this pragmatic approach will lead to a well executable plan.

# Why Istec?

## + High quality

In everything we do, we go for the highest possible quality.

## + Full package

A one-stop-shop for engineering, SIL proof tests, turnaround services and supplying machine monitoring systems.

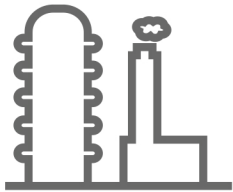
## + Fast service

We aim for great service, quick deliveries and short response times.

## + Very accessible

Istec is easily approachable and enables direct contact with the specialists. We solve your problems fast, adequately and with the highest possible service level.

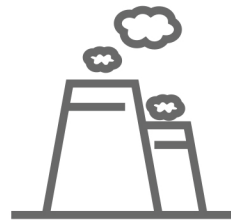
## Our main industries



Petrochemical



Chemical



Energy



Bulk solids

# Contact

Do you have a question about our products or services? Feel free to contact us. Our specialists are ready to help you.

## Phone

NL: +31(0)252 433 400

BE: +32 (0)89 303 204

## Mail

[mail@istec.nl](mailto:mail@istec.nl)

## Website

[www.istec.nl](http://www.istec.nl)

# Offices

## Lisse (NL)

Meer en Duin 8  
2163 HA, Lisse

## Geleen (NL)

Chemelot, Geleen  
G001-016, Gate 7

## Opoeteren (BE)

Zendelstraat 6  
3680 Opoeteren

