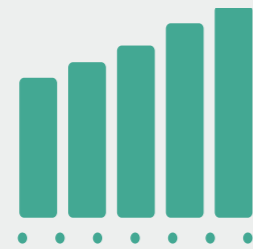


# Istec RecipSys 200

A compact monitoring system for reciprocating compressors delivering accurate real-time data of rider band wear, eliminating the need for periodic production shutdowns for manual inspections.



# Benefits



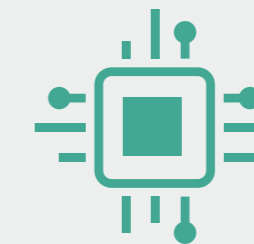
## Increased uptime

The compact monitoring system eliminates the need for periodic production shutdowns for manual inspections, lowering downtime.



## Any compressor

The transmitter based system has a low financial impact and enables extending monitoring coverage to any compressor.



## Any configuration

The system is expandable to any cylinder configuration, compatible with any sensor brand and integrable to any existing monitoring system.

# Why measure rod drop?

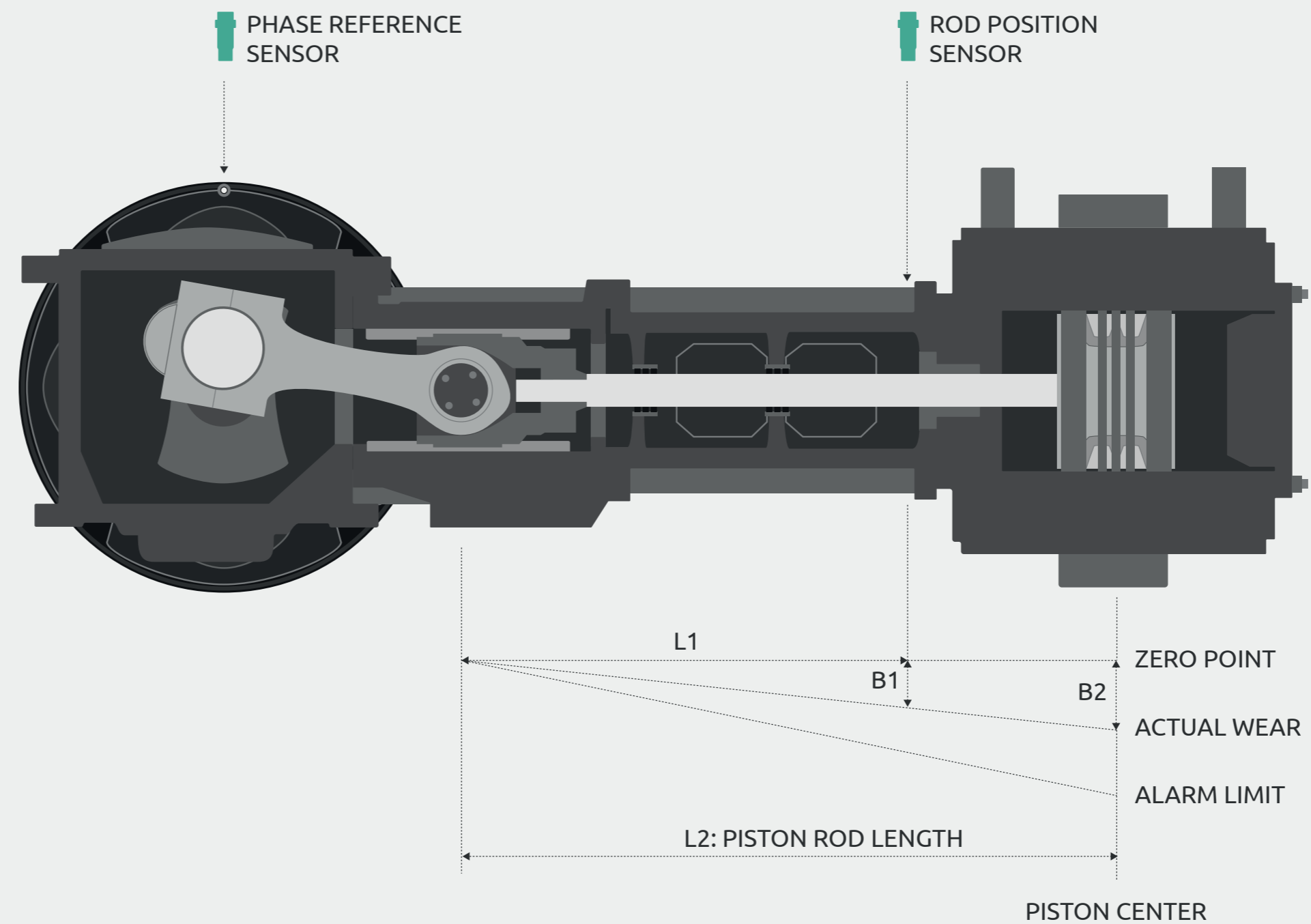
Rod drop measurement is a key metric of a compressor's mechanical health. It indicates the condition of rider bands, which are wearing parts on the compressor's piston.

The condition of rider bands are monitored periodically by manual inspections, and replaced before being worn beyond an acceptable limit. The RecipSys eliminates the need for periodic production shutdowns for manual inspections.

# How it works

By using a phase trigger, the RecipSys 200 is able to filter the displacement signal to the right phase angle.

The triggered signal is much more accurate than any overall measurement and can monitor both machines with fixed RPM and variable RPM.



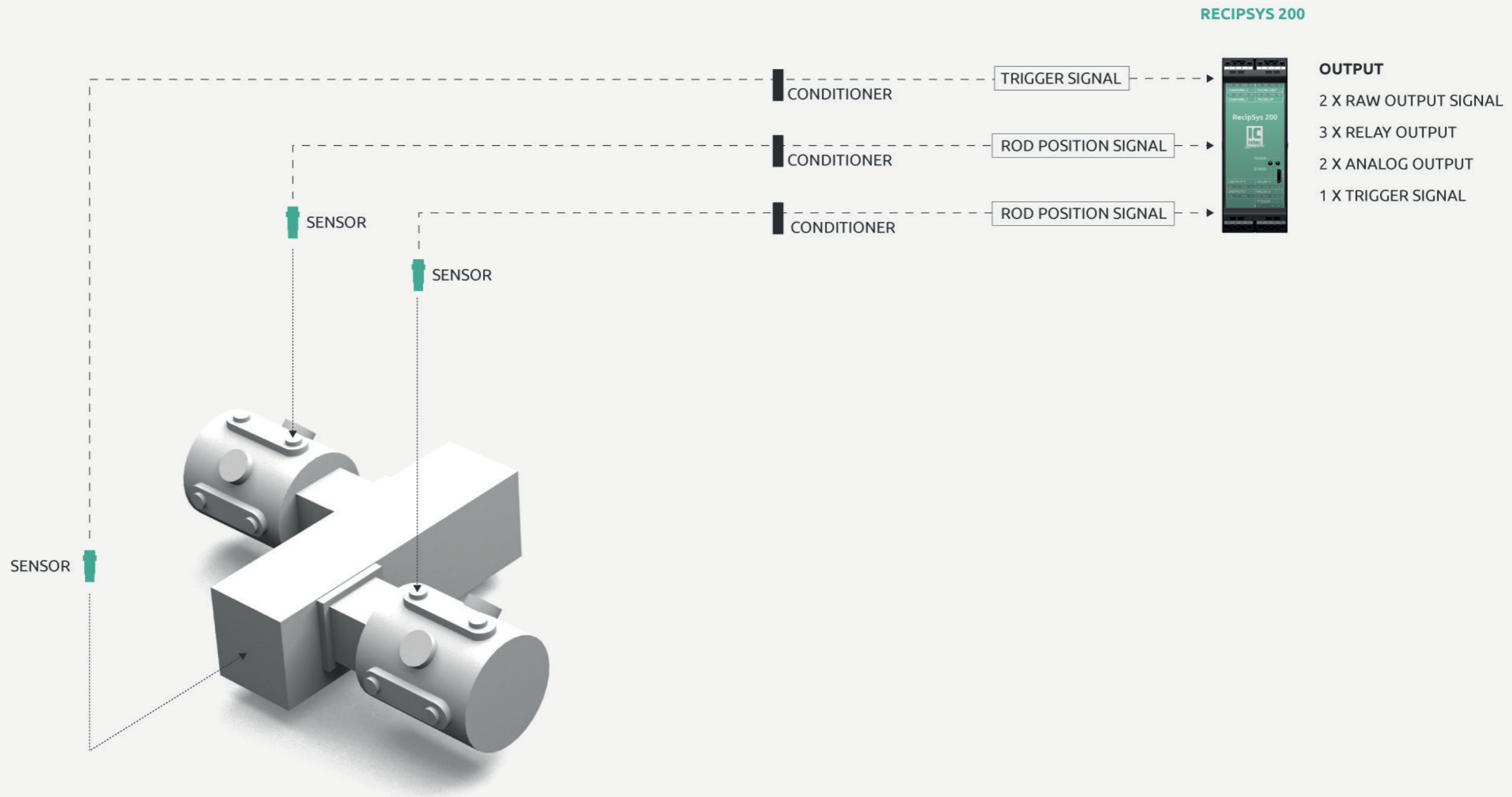
Watch video →

[HTTPS://YOUTU.BE/Ryh4vqyad7a](https://youtu.be/ryh4vqyad7a)

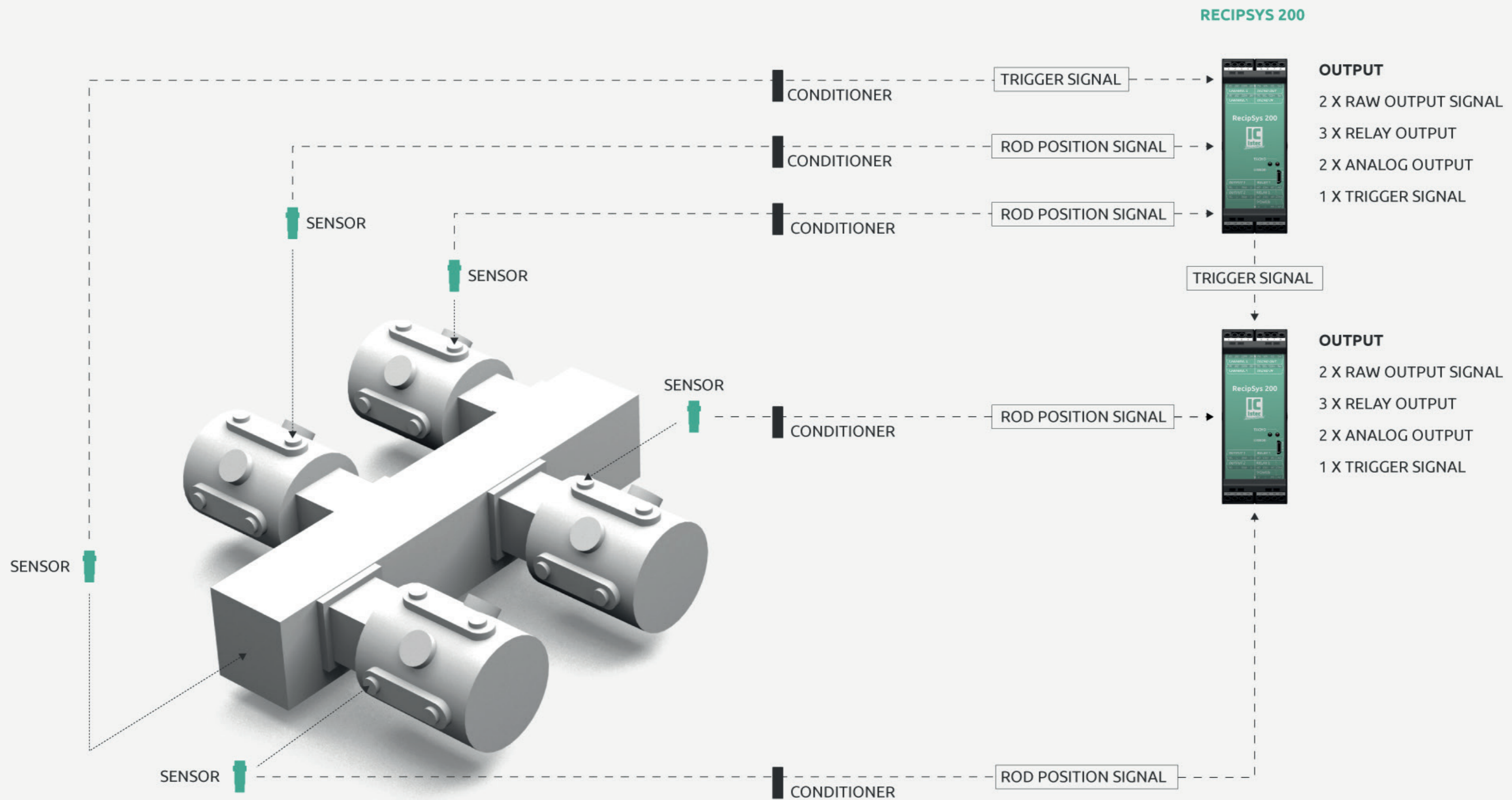
# Configurations

The system is expandable to any cylinder configuration, compatible with any sensor brand and integrable to any existing monitoring system.

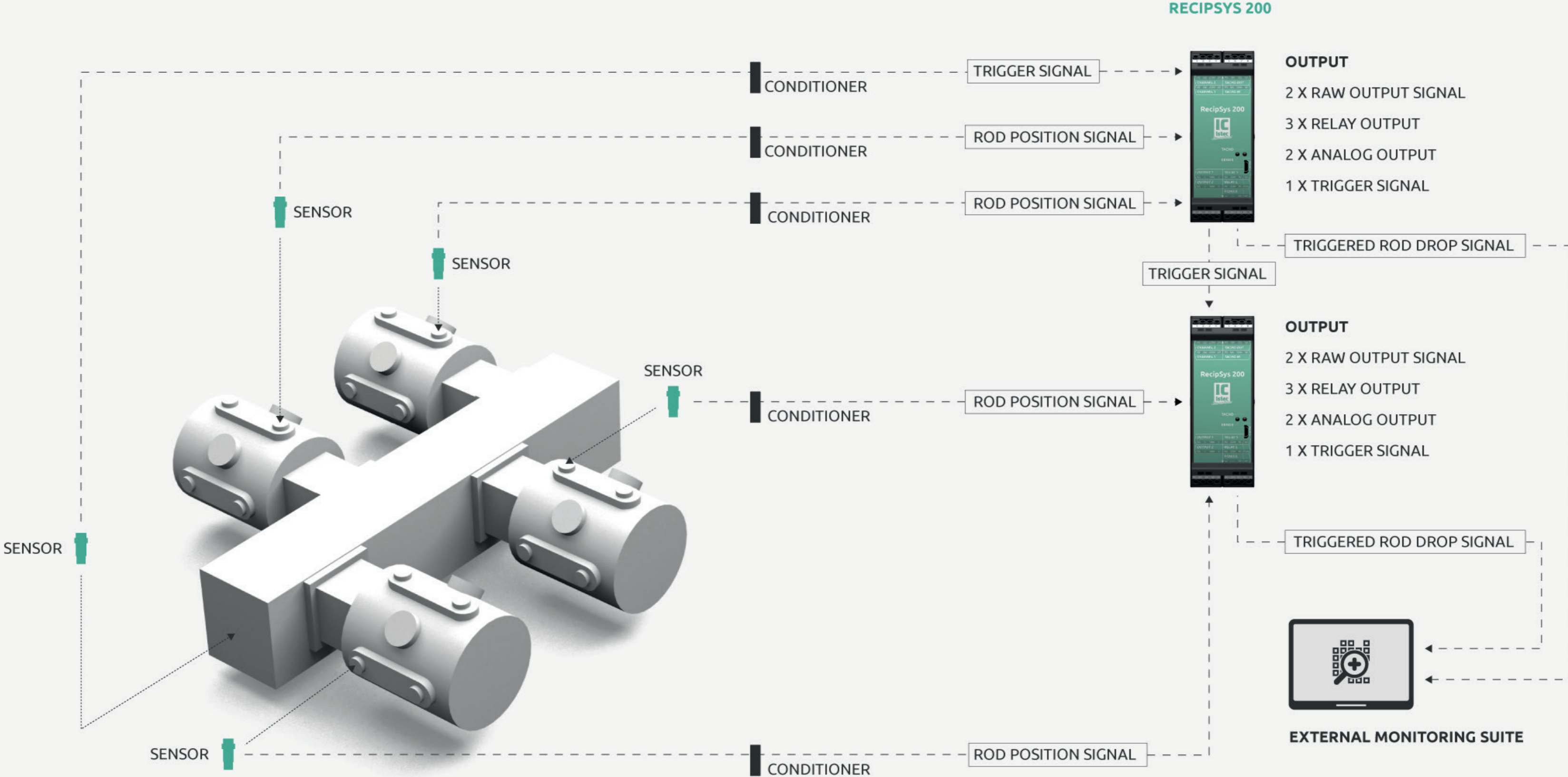
# Two cylinder compressor



# Four cylinder compressor



# Four cylinder compressor with monitoring suite





# Technical features

# Features

## Phase-triggered accuracy

The monitoring system filters the displacement signal to the right phase angle, to provide a reliable measurement for compressors with fixed or variable RPM. The triggered signal ensures the accuracy as opposed to overall measurements.

## Compact monitoring system

The system has a small technical footprint and is fully functional as an independent monitoring system.

## Monitoring suite integration

The monitoring system includes two industry-standard analogue (4-20 mA) outputs to enable integration with any monitoring suite.

# Input

## Rod displacement

- 2 channels
- Proximity sensor
- Galvanic isolated input
- 0...-24 Vdc

## Phase reference

- 1 channel
- Promixity sensor
- Galvanic isolated input
- 0...-24 Vdc



# Output

## Analog output

- Triggered output signal
- 2 channels
- 0...20mA / 4...20mA / 0...10V

## Raw signal outputs

### Rod displacement

- 2 channels
- 0...-24 Vdc; 10 mA max

### Phase reference

- 1 channel
- 0...-24 Vdc

## Relays

### Rod displacement

- Single-pole double-throw (SPDT)
- 2 outputs
- Channel alarm, programmable
- 1 A 24 Vdc

### System

- Single-pole double-throw (SPDT)
- 1 output
- System status
- 1 A 24 Vdc

# An Istec product

We ensure maximal value generation of your machinery by ensuring a full coverage of protection and monitoring solutions for critical assets. Our product design bridges the gaps in the currently available range and taps into our 45 years of expertise in the industry.

# Engineering

With the largest independent in-house team of highly certified engineers in Western Europe, we are ideally qualified to offer customer-specific solutions for building instrumentation cabinets - from junction boxes to complete cabinets.



# Contact

## Istec International

+31(0)252 433 400

mail@istec.com

www.istec.com

## Buy online at Industores

Industores is an online industrial marketplace for renowned suppliers.

[Buy online at Industores](#) →

[HTTPS://WWW.INDUSTORES.COM/EN/RECIPSYS-200.HTML](https://www.industores.com/en/recipsys-200.html)